

# QWTelnet Version 2

*By Mario H. Fietz, DC7CCC, (CC-BY-SA) 2012*

## What is it?

With QWTelnet you can receive spots from the DXCluster Net via the internet. Also you can receive the spots from the skimmer network „Reverse Beacon Net“ and it is a parser of the SOTAwatch website [www.sotawatch.org](http://www.sotawatch.org).

You can set audio alerts on callsigns, modes, ... so that you not always have to pay attention to the screen.

## Setup and Uninstall

1. Download QWTelnet Zip-File from <http://www.qwj.de/qwtelnet>
2. unzip the file
3. in the directory QWTELNET is all what you need. Start the program `qwtelnet.exe`
4. there is no un-installer. If you do not like QWTelnet, simply delete the directory QWTELNET

## Configuration Files

there are three configuration files:

### **qwtelnet.cfg**

Here you can configure some runtime parameters. You can switch off some Tabs, if you do not want to see them. Here are the DX-Cluster Node Addresses (DXC) configured and a server address for the Reverse Beacon Network (RBN).

Maybe you should put on first host position your favourite DXC.

Set your QTH-Locator and your callsign.

All parameters are documented in the configuration file.

### **qwpattern.cfg**

Here you can change, add or delete rules for finding the right DXC/RBN spot for the right tab.

There are four comma-separated parameters in one row:

Example:

```
Aurora,<AUR>,aurora,y
```

That means:

1. A rule for the Aurora TAB in the VHF section
2. <AUR> is the value for what QWTelnet is looking for.
3. If this pattern is found the sound `sound/aurora.wav` will be played
4. `y` means, this spot will be copied in the ALERT-Tab, too

you can define your own rules to find the right spots, e.g. if you want to filter all WAP stations with an alert:

```
Alert,WAP ,wapsound,y
```

That means, all spots with the pattern „WAP“ in the remark section of the spot will be copied onto the Alert-Tab and the sound `sound/wapsound.wav` will be played.

### **qwalert.cfg**

Here you set alerts on calls or partials. If you are waiting for a special activity, then you can set here an alert.

e.g. you are waiting for DF0CCC on a WFF activity on 40m SSB, then add:

```
call=df0ccc,40,fone
```

if you are looking for all bands and mode:

```
call=3a21f,all,all
```

if you are looking for Australia on 10m:

```
call=vk,10,all
```

you also set here alerts for the SOTA parser for bands and modes.

```
sota=20m,off  
sota=30m,on
```

means: No alerts for 20m spots but alerts for 30m spots.

```
sota=on  
sotacall=on
```

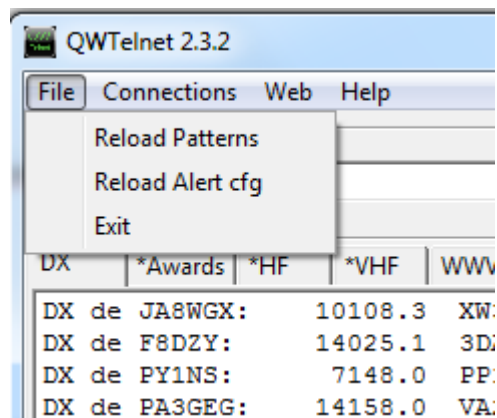
means: play the sound/sota.wav file and play the announced SOTA call

```
ms=off  
wlota=off
```

means: do not play announces for Meteor Scatter spots and also not for lighthouses.

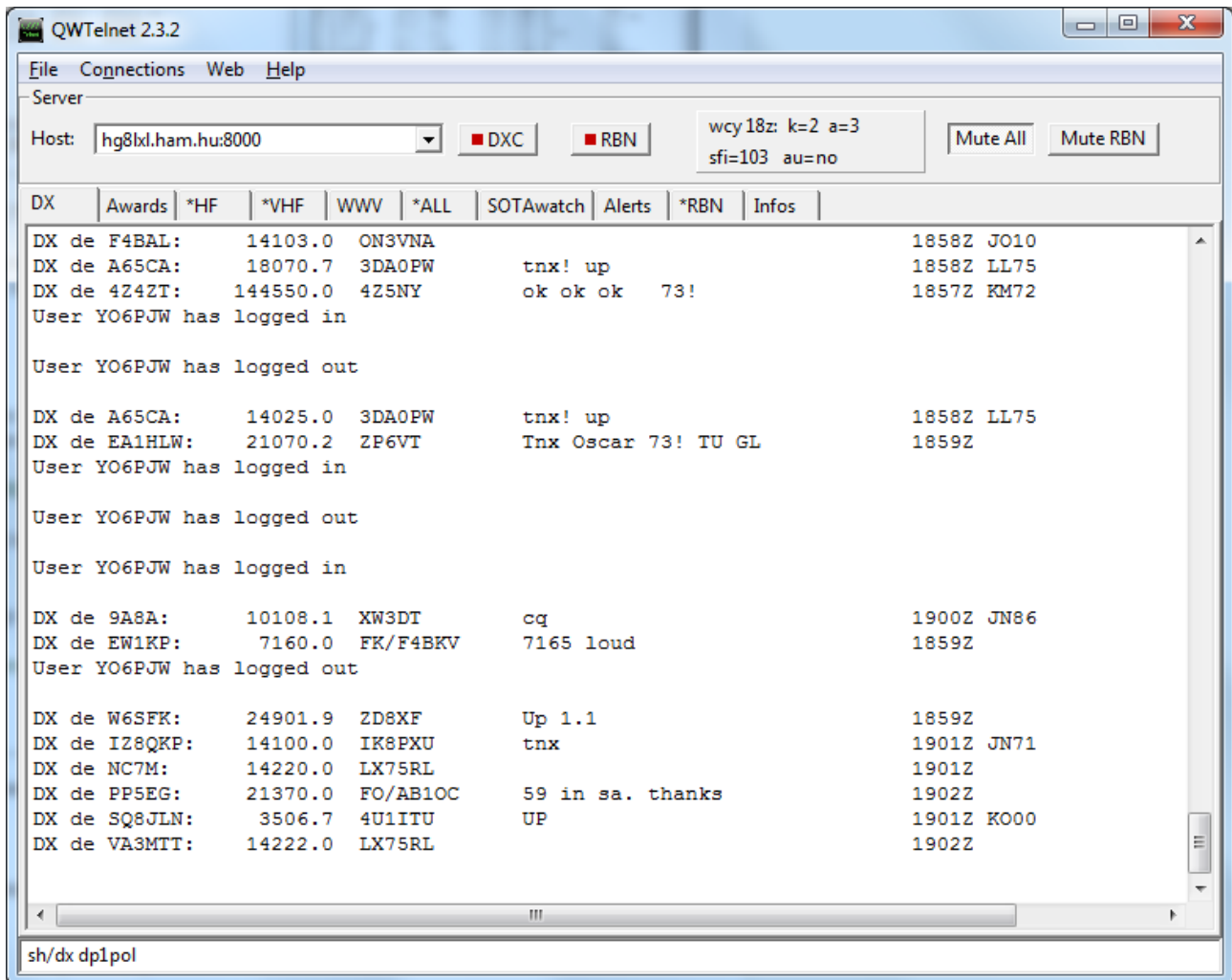
**Hint:**

if you change alerts or patterns, you can reload via the menu => file the rules without restart the programm.



## Connect a DX-Cluster Node

1. Change to the „DX“-Tab
2. Select your favourite node from the drop-down list
3. click on the DXC button or select from the menu „Connect DXC“
4. enter your callsign on the bottom line an hit [Enter]
5. you can send commands to the cluster via the bottom line & [Enter]



*you can enter commands & hit return to send them to the DXC or RBN*

## Connect the Reverse Beacon Net

1. change to the „RBN“-Tab
2. click on the RBN button or select from the menu „Connect RBN“

3. enter your callsign on the bottom line and hit [Enter]
4. you can send commands via the bottom line

## SOTAwatch

This is a “receive-only“ feature. If you want to send spots, please change to „www.sotawatch.org“.

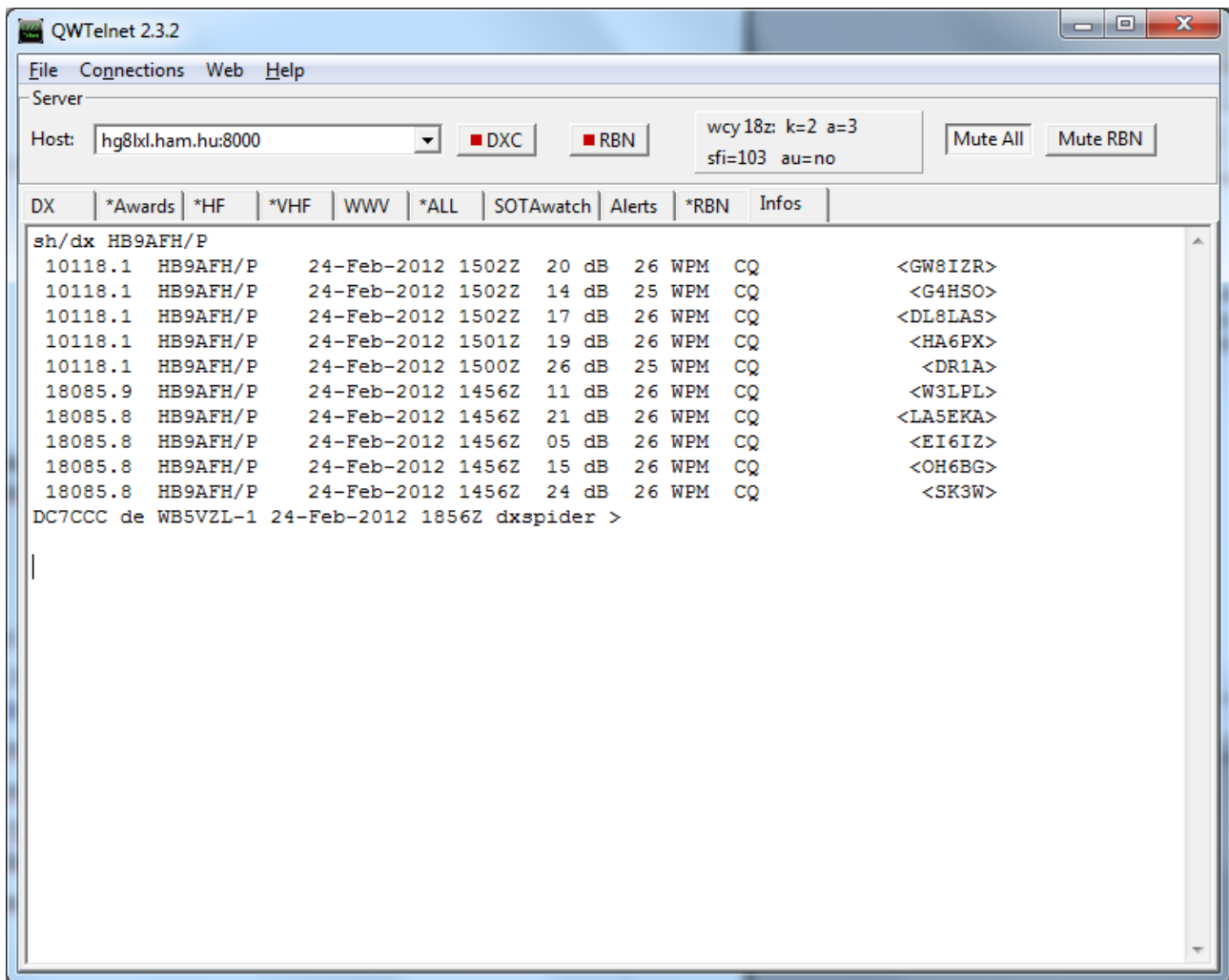
## Information

### Menu

via the menu => web you can reach links into the internet. SOTAmap shows you the activity of the day centered to your QTH-Locator which is configured in the configuration file `qwtelnet.cfg`.

### Doubleclicks

1. Double-click the callsign on the DX-Tab and the HF-Tab gives you DXCC-information
2. Double-click the callsign or the IOTA reference on the IOTA Tab connects you to the IOTA Database at <http://www.rsgbiota.org>
3. Double-click on the SOTA reference on the SOTA Tab informs you about the reference
4. Double-click on the SOTA reference on the SOTAwatch Tab informs you about the reference
5. Double-click on the call on the SOTAwatch sends a sh/dx into the DXC and the RBN. If the results are found it will be displayed on the INFO Tab
6. A double-click on the callsign on the INFO tab connects you to qrz.com



*The Info Tab, filled by a double-click on the callsign on the sotawatch tab. It is necessary, that you are connected to the DXC and/or RBN*

## Sounds

You can use for all sounds in the `sound` directory your own sounds if you do not like CW. But only files in the WAV format are allowed.

## Contact

Please contact me via email: [dc7ccc@darc.de](mailto:dc7ccc@darc.de)

or facebook: <http://www.facebook.com/mario.fietz>

only

## EA2/VI-008 - Ballo

Name	<b>Ballo</b>
Height	1198m
Points	4
Latitude	N 42.84370041
Longitude	W 2.3053
Locator	IN82UU
Sunrise	06:51 UTC
Sunset	17:53 UTC
Activations	2
Last Activation	22/10/2011
Call	EB2FDT/P
<a href="#">Google Maps</a>   <a href="#">openstreetmap</a>   <a href="#">SOTAwatch</a>	



### Near By:

Ref	Name	Height	Points	Loc	qrb (km)	Dir	Act	Date	Call
<b>EA2/VI-003</b>	Aratz	1446m	6	IN82UW	8.7	1°	7	09/12/2011	EB2GKK/P
<b>EA2/SS-009</b>	Txurruko Punta	990m	2	IN82VW	9.8	28°	1	19/11/2011	EB2FDT/P
<b>EA2/VI-013</b>	Bitigarra	1169m	4	IN82TS	10.7	209°	1	04/12/2011	EB2FDT/P
<b>EA2/VI-045</b>	Berein	783m	1	IN82SV	11.7	300°	0		
<b>EA2/NV-048</b>	Otzamendi	1255m	4	IN82UR	11.7	165°	0		
<b>EA2/SS-021</b>	Gazteluberri	860m	2	IN82VW	11.8	28°	0		

*SOTA Information Link*

## QW COUNTRY INFO

Result

Call	<a href="#">TF3AO</a>
Prefix	TF
Country	 <b>Iceland</b>
City (Capital)	Reykjavik
Locator	HP94BD
Distance	2153 (from JO42AI)
Direction	319
WAZ	40
ITU	17
WAC	EU
Fri Feb 24 2012	
sunrise : 08:57 sunset : 18:23	
<a href="#">über Iceland</a> <a href="#">about Iceland</a>	



[Beammap](#)

[Worldmap](#)

[Close](#)

*QW Country Info*





*SOTA Activity of the Day*